



27 Roulston Rd, Windham NH 03087 • Phone: (603) 894-6100 • Fax: (603) 894-6161
cet@cettechnology.com • www.cettechnology.com

UL Approved Power Transformers - PST/PDST Series

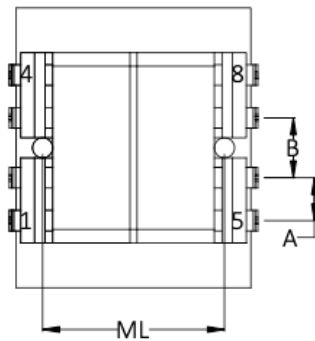
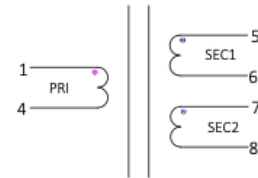
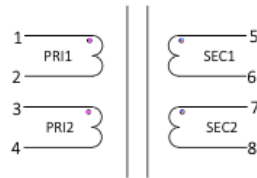
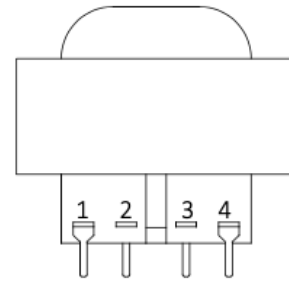
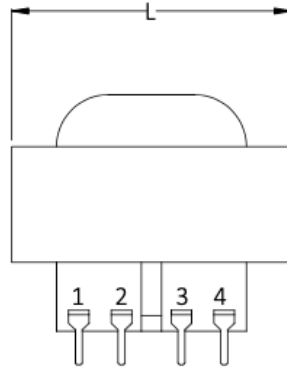
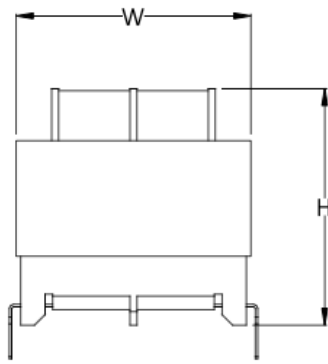
PST/PDST CET SPLIT BOBBIN-HIGHLY ISOLATED FEATURES

The PST/PDST series of Split Bobbin Transformers are manufactured with the following features:

- High isolation – 2500V HIPOT is standard.
- Low capacitive cooling – no electrostatic shield necessary.
- UL Recognized File # E146472
- Approved to CSA 22.2 No. 66
- Class B Insulation 130°C
- Custom versions also available
- Less manufacturing time – no crossovers of primary and secondary leads.
- PC pins – allow direct insertion in PC boards.

Each transformer is available with single 115V or dual 115/230V primaries. In addition, secondaries are split so that they can be series or parallel connected.

Size	VA	L	W	H	ML	A	B	C	kg
2	1.1	34.8	28.4	23.6	--	6.4	6.4	30.5	0.08
3	2.4	34.8	28.4	30.0	--	6.4	6.4	30.5	0.11
4	6	41.1	33.3	33.3	26.9	6.4	6.4	32.5	0.20
5	12	47.5	39.6	36.3	31.8	7.6	10.2	35.8	0.32
6	20	57.1	47.5	36.3	38.1	7.6	10.2	40.6	0.36
7	36	66.5	55.4	39.6	--	10.2	10.2	47.0	0.50



PART NUMBER		SECONDARY RMS RATING	
Single 115V	Dual 115V/230V	Series	Parallel
6 pin	8 pin	--	--
PST 2-10	PDST 2-10	10V C.T. @ 0.11A	5V @ 0.22A
PST 3-10	PDST 3-10	10V C.T. @ 0.25A	5V @ 0.5A
PST 4-10	PDST 4-10	10V C.T. @ 0.6A	5V @ 1.2A
PST 5-10	PDST 5-10	10V C.T. @ 1.2A	5V @ 2.4A
PST 6-10	PDST 6-10	10V C.T. @ 2A	5V @ 4A
PST 7-10	PDST 7-10	10V C.T. @ 3.6A	5V @ 7.2A
PST 2-12	PDST 2-12	12.6V C.T. @ 0.09A	6.3V @ 0.18A
PST 3-12	PDST 3-12	12.6V C.T. @ 0.2A	6.3V @ 0.4A
PST 4-12	PDST 4-12	12.6V C.T. @ 0.5A	6.3V @ 1.0A

PST 5-12	PDST 5-12	12.6V C.T. @1.0A	6.3V @ 2.0A
PST 6-12	PDST 6-12	12.6V C.T. @1.6A	6.3V @3.2A
PST 7-12	PDST 7-12	12.6V C.T. @2.85A	6.3V @ 5.7A
PST 2-16	PDST 2-16	16V C.T. @ 0.07A	8V @ 0.14A
PST 3-16	PDST 3-16	16V C.T. @ 0.15A	8V @ 0.3A
PST 4-16	PDST 4-16	16V C.T. @ 0.4A	8V @ 0.8A
PST 5-16	PDST 5-16	16V C.T. @ 0.8A	8V @ 1.6A
PST 6-16	PDST 6-16	16V C.T. @ 1.25A	8V @ 2.5A
PST 7-16	PDST 7-16	16V C.T. @ 2.25A	8V @ 4.5A
PST 2-20	PDST 2-20	20V C.T. @ 0.055A	10V @0.11A
PST 3-20	PDST 3-20	20V C.T. @ 0.12A	10V @ 0.24A
PST 4-20	PDST 4-20	20V C.T. @ 0.3A	10V @ 0.6A
PST 5-20	PDST 5-20	20V C.T. @ 0.6A	10V @ 1.2A
PST 6-20	PDST 6-20	20V C.T. @1A	10V @ 2A
PST 7-20	PDST 7-20	20V C.T. @ 1.8A	10V @ 3.6A
PST 2-24	PDST 2-24	24V C.T. @ 0.045A	12V @ 0.09A
PST 3-24	PDST 3-24	24V C.T. @ 0.1A	12V @ 0.2A
PST 4-24	PDST 4-24	24V C.T. @ 0.25A	12V @ 0.5A
PST 5-24	PDST 5-24	24V C.T. @ 0.5A	12V @ 1.0A
PST 6-24	PDST 6-24	24V C.T. @ 0.8A	12V @ 1.6A
PST 7-24	PDST 7-24	24V C.T. @ 1.5A	12V @ 3.0A
PST 2-28	PDST 2-28	28V C.T. @ 0.04A	14V @ 0.08A
PST 3-28	PDST 3-28	28V C.T. @ 0.085A	14V @ 0.17A
PST 4-28	PDST 4-28	28V C.T. @ 0.2A	14V @ 0.4A
PST 5-28	PDST 5-28	28V C.T. @ 0.42A	14V @ 0.84A
PST 6-28	PDST 6-28	28V C.T. @ 0.7A	14V @ 1.4A
PST 7-28	PDST 7-28	28V C.T. @ 1.3A	14V @ 2.6A
PST 2-36	PDST 2-36	36V C.T. @ 0.03A	18V @ 0.06A
PST 3-36	PDST 3-36	36V C.T. @ 0.065A	18V @ 0.13A
PST 4-36	PDST 4-36	36V C.T. @ 0.17A	18V @ 0.34A
PST 5-36	PDST 5-36	36V C.T. @ 0.35A	18V @ 0.7A

PST 6-36	PDST 6-36	36V C.T. @ 0.55A	18V @ 1.1A
PST 7-36	PDST 7-36	36V C.T. @ 1A	18V @ 2A
PST 2-48	PDST 2-48	48V C.T. @ 0.023A	24V @ 0.046A
PST 3-48	PDST 3-48	48V C.T. @ 0.05A	24V @ 0.1A
PST 4-48	PDST 4-48	48V C.T. @ 0.125A	24V @ 0.25A
PST 5-48	PDST 5-48	48V C.T. @ 0.25A	24V @ 0.5A
PST 6-48	PDST 6-48	48V C.T. @ 0.4A	24V @ 0.8A
PST 7-48	PDST 7-48	48V C.T. @ 0.75A	24V @ 1.5A
PST 2-56	PDST 2-56	56V C.T. @ 0.02A	28V @ 0.04A
PST 3-56	PDST 3-56	56V C.T. @ 0.045A	28V @ 0.09A
PST 4-56	PDST 4-56	56V C.T. @ 0.11A	28V @ 0.22A
PST 5-56	PDST 5-56	56V C.T. @ 0.22A	28V @ 0.44A
PST 6-56	PDST 6-56	56V C.T. @ 0.35A	28V @ 0.7A
PST 7-56	PDST 7-56	56V C.T. @ 0.65A	28V @ 1.3A
PST 2-120	PDST 2-120	120V C.T. @ 0.01A	60V @ 0.02A
PST 3-120	PDST 3-120	120V C.T. @ 0.02A	60V @ 0.04A
PST 4-120	PDST 4-120	120V C.T. @ 0.05A	60V @ 0.1A
PST 5-120	PDST 5-120	120V C.T. @ 0.1A	60V @ 0.2A
PST 6-120	PDST 6-120	120V C.T. @ 0.16A	60V @ 0.32A
PST 7-120	PDST 7-120	120V C.T. @ 0.3A	60V @ 0.6A