



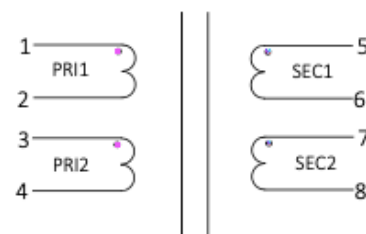
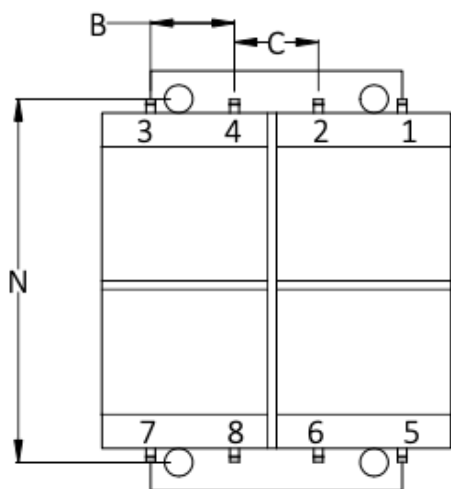
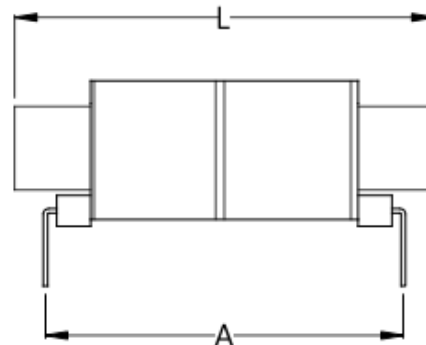
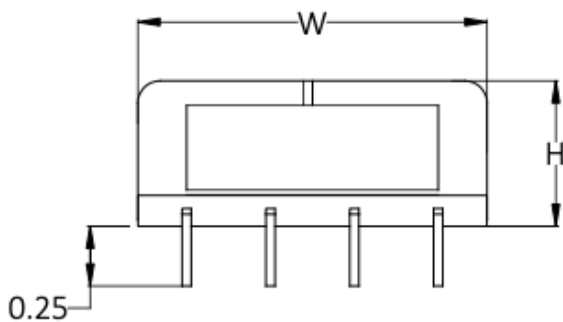
27 Roulston Rd, Windham NH 03087 • Phone: (603) 894-6100 • Fax: (603) 894-6161
cet@cettechnology.com • www.cettechnology.com

UL Approved Power Transformers - PLP Series

PLP FEATURES

- Hum-bucking (semi-toroidal) construction to diminish radiated magnetic field and balance winding.
- Low profile design
- Dual primaries: 115/230V, 50/60Hz
- 1500 V RMS HIPOT
- UL recognized File #E146472
- Approved to CSA 22.2 No.66
- Class B Insulation 130°C
- Custom versions also available

VA	A	B	C	L	W	H	N	D
2	40.6	9.5	9.5	47.5	39.6	16.5	--	1.04X0.51
6	40.6	9.5	9.5	47.5	39.6	21.6	--	1.04X0.51
12	50.8	12.7	12.7	63.5	50.8	27.1	--	1.04X0.51
24	48.3	15.2	13.5	72.9	57.2	31.8	61.2	1.04 SQ
28	55.4	15.2	16.8	79.2	63.5	34.9	66.5	1.04 SQ



PART #	VA (SIZE)	Series	Parallel
PLP10-250	2	10V C.T. @ 250mA	5V @ 500mA
PLP10-600	6	10V. C.T. @ 600mA	5V @ 1.2A
PLP10-1200	12	10V C.T. @ 1200mA	5V @ 2.4A
PLP10-2400	24	10V C.T. @ 2.40A	5V @ 4.80A
PLP10-4800	48	10V C.T. @ 4.80A	5V @ 9.60A
PLP12-200	2	12.6V C.T. @ 200mA	6.3V @ 400mA
PLP12-450	6	12.6V C.T. @ 450mA	6.3V @ 900mA
PLP12-900	12	12.6V C.T. @ 900mA	6.3V @ 1.8A

PLP12-1900	24	12.6V C.T. @ 1.90mA	6.3V @ 3.80A
PLP12-3800	48	12.6V C.T. @ 3.80mA	6.35V @ 7.60A
PLP16-150	2	16V C.T. @ 150mA	8V @ 300mA
PLP16-350	6	16V C.T. @ 350mA	8V @ 700mA
PLP16-700	12	16V C.T. @ 700mA	8V @ 1.4A
PLP16-1500	24	16V C.T. @ 1.50A	8V @ 3.00A
PLP16-3000	48	16V C.T. @ 3.00A	8V @ 6.00A
PLP20-125	2	20V C.T. @ 125mA	10V @ 250mA
PLP20-300	6	20V C.T. @ 300mA	10V @ 600mA
PLP20-600	12	20V C.T. @ 600mA	10V @ 1.2A
PLP20-1200	24	20V C.T. @ 1.20A	10V @ 2.40A
PLP20-2400	48	20V C.T. @ 2.40A	10V @ 4.80A
PLP24-100	2	24V C.T. @ 100mA	12V @ 200mA
PLP24-250	6	24V C.T. @ 250mA	12V @ 500mA
PLP24-500	12	24V C.T. @ 500 mA	12V @ 1A
PLP24-1000	24	24V C.T. @ 1.00A	12V @ 2.00A
PLP24-2000	48	24V C.T. @ 2.00A	12V @ 4.00A
PLP30-85	2	30V C.T. @ 85mA	15V @ 170mA
PLP30-200	6	30V C.T. @ 200mA	15V @ 400mA
PLP30-400	12	30V C.T. @ 400mA	15V @ 800mA
PLP30-800	24	30V C.T. @ 800mA	15V @ 1.60A
PLP30-1600	48	30V C.T. @ 1.60A	15V @ 3.20A
PLP34-75	2	34V C.T. @ 75mA	17V @ 150mA
PLP34-170	6	34V C.T. @ 170mA	17V @ 340mA
PLP34-340	12	34V C.T. @ 340mA	17V @ 680mA
PLP34-700	24	34V C.T. @ 700mA	17V @ 1.40A
PLP34-1400	48	34V C.T. @ 1.40A	17V @ 2.80A
PLP40-60	2	40V C.T. @ 60mA	20V @ 120mA
PLP40-150	6	40V C.T. @ 150mA	20V @ 300mA
PLP40-300	12	40V C.T. @ 300mA	20V @ 600mA
PLP40-600	24	40V C.T. @ 600mA	20V @ 1.20A

PLP40-1200	48	40V C.T. @ 1.20A	20V @ 2.40A
PLP56-45	2	56V C.T. @ 45mA	28V @ 90mA
PLP56-100	6	56V C.T. @ 100mA	28V @ 200mA
PLP56-200	12	56V C.T. @ 200mA	28V @ 400mA
PLP56-425	24	56V C.T. @ 425mA	28V @ 850mA
PLP56-850	48	56V C.T. @ 850mA	28V @ 1.70A
PLP88-28	2	88V C.T. @ 28mA	44V @ 56mA
PLP88-65	6	88V C.T. @ 65mA	44V @ 130mA
PLP88-130	12	88V C.T. @ 130mA	44V @ 260mA
PLP120-20	2	120V C.T. @ 20mA	60V @ 40mA
PLP120-50	6	120V C.T. @ 50mA	60V @ 100mA
PLP120-100	12	120V C.T. @ 100mA	60V @ 200mA
PLP230-10	2	230V C.T. @ 10mA	115V @ 20mA
PLP230-25	6	230V C.T. @ 25mA	115V @ 50mA
PLP230-50	12	230V C.T. @ 50mA	115V @ 100mA